

ARKRAY Urinalysis system



Urine Sediment Analyzer

AUTION EYE

AI-4510

Fully Automated Urine Analyzer

AUTION MAX

AX-4060

Complete Urine Chemistry and Sediment Analysis system
providing a streamlined fully-automated workflow solution
for clinical urine testing

ARKRAY Urinalysis system

Smart transfer system allows for a compact footprint.

The AUTION EYE can be operated stand alone or connected to the AUTION MAX series - resulting in a very small footprint (1065 x 600mm).



Connection of the AUTION MAX and AUTION EYE enables efficient urine sediment analysis via utilization of the qualitative urine test results.

Gating Function

Use of the gating function allows defined criteria to determine if urine samples should be run on both devices. User defined rules can also dictate if urine element analysis should not be performed, based on the qualitative test result - even if this has previously been ordered.



Cross-check: Perform only a microscopic confirmation test when necessary.

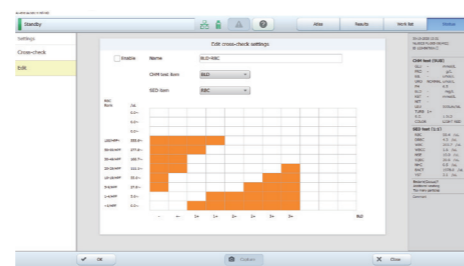
Gating function: Judge if urine formed element analysis is needed (run or pass).

Send the data of urine qualitative tests.

Cross-Check Function for Result Confirmation

Checks the reliability of measurement results by checking for deviations in measurement results between chemical tests and tangible component analysis items.

Improves reliability of results by comparing chemistry test results with sediment analysis.



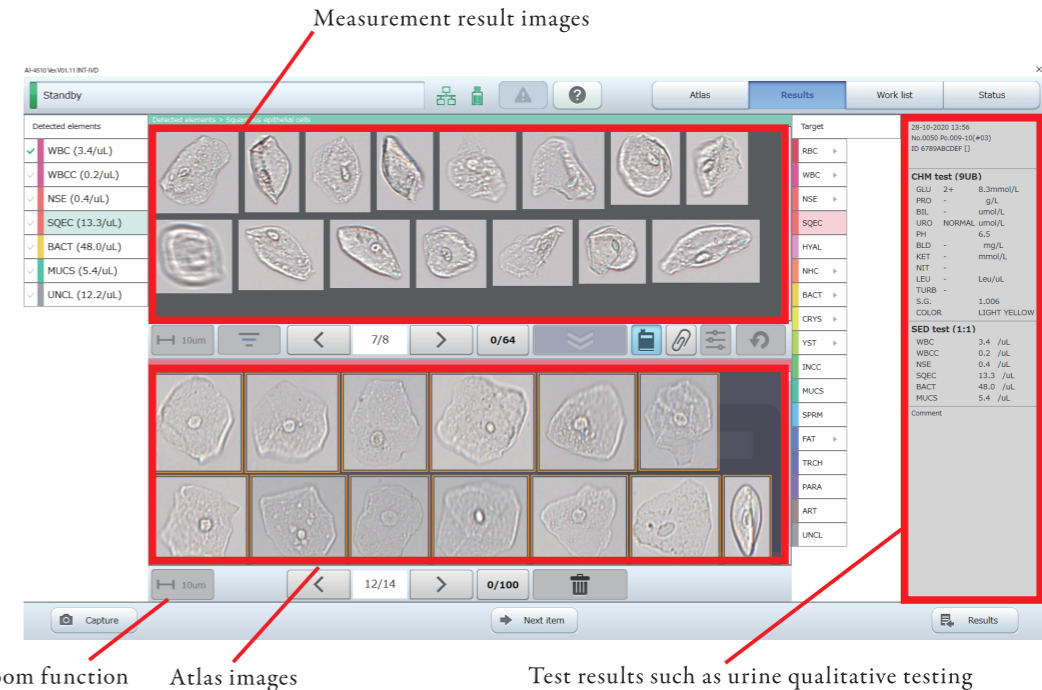
Automatic Dilution Function for improved Workflow

Autodilution of highly samples analyzed with AUTION MAX reduces manual intervention for sediment analysis.



We guide you: Compare and confirm your findings with classified particles from our "Atlas image collection" library.

The new 'Atlas Image Collection' is included in the AUTION EYE software. Examples of all 12 categories can be displayed and compared to actual patient reports. Additionally, new, interesting images can be added to the collection allowing it to be used as a valuable training tool.

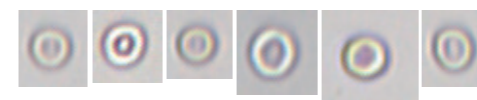


Easier Identification of Particle Images

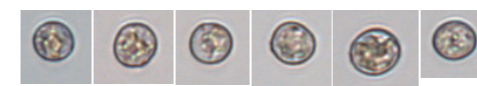
Color images allow for improved visual checking of differences in urinary formed elements - assists in particle identification. Also, the summary screen can show multiple particles within a single screen, allowing rapid assessment of particle frequency and size comparisons to be made.

Example of particle images

Red Blood Cells (RBC)



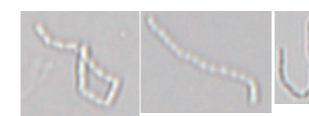
White Blood Cells (WBC)



Casts



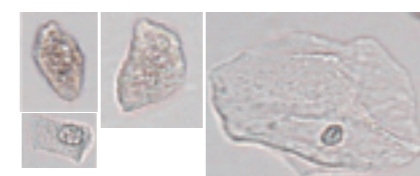
Bacteria (BACT)



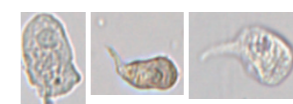
Crystals



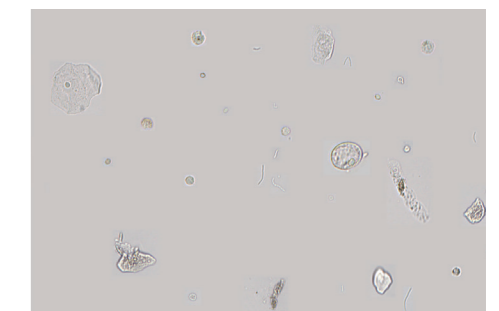
Squamous Epithelial cells (SQEC)



Non-Squamous Epithelial cells (NSE)



Summary screen (partial)



The AUTION EYE AI-4510 is an analyzer that performs urine formed element analysis.

specifications AUTION EYE AI-4510

Sample Type	Urine	Measurement Time	80 seconds per sample
Measurement items	12 automated classification items: Red blood cells (RBC), White blood cells (WBC), White blood cell clumps (WBCC), Squamous epithelial cells (SQEC), Non-squamous epithelial cells (NSE), Hyaline casts (HYAL), Unclassified casts (NHC), Bacteria (BACT), Crystals (CRYS), Yeast (YST), Mucous (MUCS) and Sperm (SPRM)	Sample loading capacity	One-way transportation(default) : Maximum 50 samples Loop transportation : Maximum 100 samples
		Display value	[/uL], [/HPF], [/LPF], [/WF] • Values can be converted to the number of elements per field. • Rank expression is possible.
		Memory capacity	Measurement results (Normal): 10,000 tests* Measurement results (QC): 1,000 tests
		Communication	Ethernet, RS-232C
Measurement principle	Flow cell digital imaging	Reagents	Sheath solution, washing solution (for maintenance), control and calibrator
Required sample volume	Minimum 2mL	Dimension	530 (W) x 600 (D) x 650 (H) mm (including the sampler)
		Weight	Approximately 57 kg



*There is a limit to the number of saved images.

specifications AUTION MAX AX-4060

Sample Type	Urine	Measurement Time	225 samples/hour
Measurement items	Glu,Pro,Bil,Uro,Ket,pH,Nit,Bld,Leu,S.G.,Alb,Cre(Calculation of Alb/Cre and Pro/Cre ratio), Turbidity and color tone	Sample loading capacity	One-way transportation(default) : Maximum 50 samples Loop transportation : Maximum 100 samples
		Memory capacity	Normal,STAT,small volume measurement: 2500tests
Measurement principle	Test strip : Dual wavelength reflectance method (One-wavelength for Bld)	Communication	RS-232C compliant
	Specific gravity : Reflection refractometry	Reagents	Uriflet S 11UA
	Color hue : Light-transmission measurement Turbidity : Light-scattering measurement method	Dimension	530 (W) x 600 (D) x 650 (H) mm (including the sampler)
Required sample volume	Normal,STAT measurement : Minimum 2 mL Small volume measurement : Minimum 1mL	Weight	Main body : Approximately 40Kg Sampler : Approximately 4Kg



Related products



New reagent

Uriflet S 11UA

Uriflet S 11UA strips can help with the screening and diagnosis of diabetic nephropathy and CKD (chronic kidney disease).

Asymptomatic early stage renal disease can be identified accurately by simultaneous microalbumin/creatinine measurement, allowing for greatly improved prognosis.

Test strip	Measurement items										Calculated items		
	GLU	PRO	BIL	URO	pH	BLD	KET	NIT	LEU	CRE	ALB	P/C	A/C
11UA	●	●	●	●	●	●	●	●	●	●	●	●	●



Semi-automatic Urine Analyzer

Aution|Daten

AE-4070

Compact design:

210 (W) x 328 (D) x 164 (H) mm/3.6 kg

High throughput:

514 tests/hour (7 seconds/test)

Auto-start function:

Measurement starts automatically when a test strip is set onto the tray.

Uriflet S 11UA will be automatically detected as well as determination of color tone.

A touchscreen allows for easy and intuitive operation The successor of Aution Eleven.

This can be backup for AX-4060.

Legal manufacturer

arkray factory, inc.

1480 Koji Konan-cho, Koka, Shiga-ken 520-3306, JAPAN

European representative

arkray europe, b.v.

Prof. J.H. Bavincklaan 2, 1183 AT Amstelveen, THE NETHERLANDS

<https://www.arkray.eu/english/>

*Designs and specifications may be changed without prior notice.

arkray global business, inc.

Yousuien-nai, 59 Gansuin-cho, Kamigyo-ku,

Kyoto 602-0008, JAPAN

TEL +81-75-662-8979 FAX +81-75-431-1202