

arkray



# Solving Problems, Evolving ADAMS

Automatic Glycohemoglobin Analyzer

# ADAMS A1c

HA-8190V

arkray, inc.

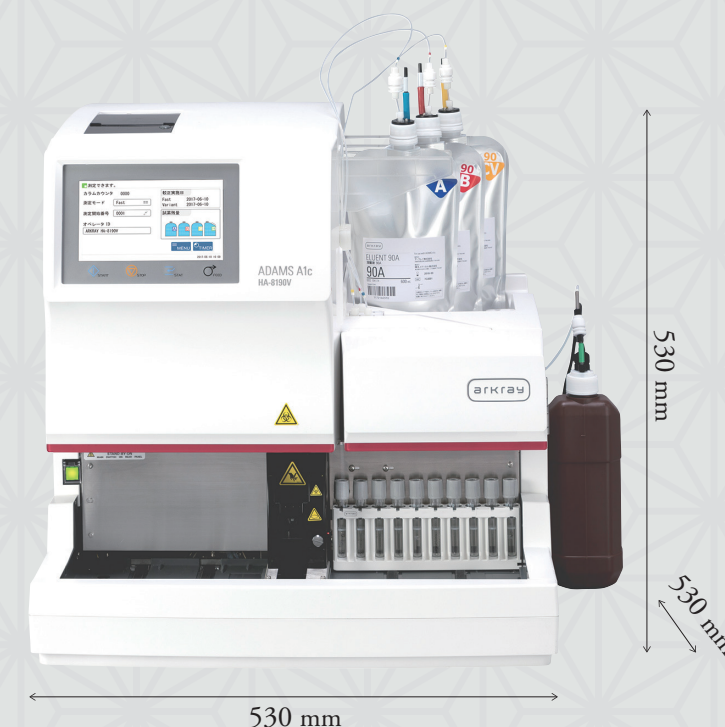


Automatic Glycohemoglobin Analyzer

# ADAMS A1c

## HA-8190V

Compact design  
HPLC technology  
\*Automatic mode switching function



\*The measurement mode automatic switching function depends on instructions from the host computer.

## Accuracy

### HPLC technology

HPLC technology provides highly accurate results

## Speed

### Fast mode

measurement in 24 seconds

### Variant mode

measurement in 58 seconds

## Flexibility

\*Continuously switchable measuring

modes Fast ⇄ Variant

\*The measurement mode automatic switching function depends on instructions from the host computer.

## Chromatograms give us 'insight'

### Reduced interference from

### Modified and Variant Hbs

HbS

HbC

HbD

HbE

Labile HbA1c

Modified hemoglobin

(sodium cyanate, acetaldehyde)

## Ease to Use

### Color LCD

### Multi-functional racks

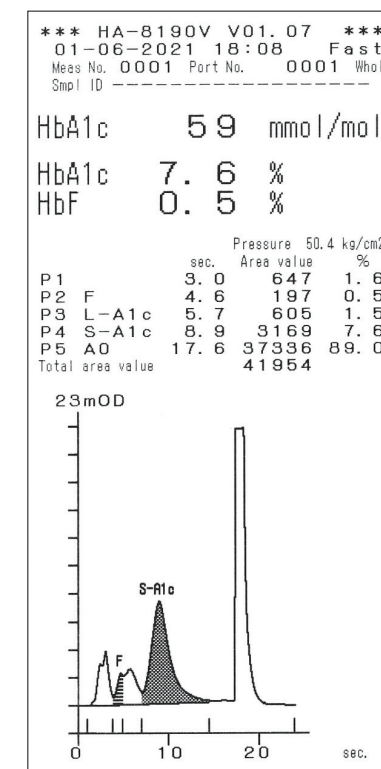
## Efficiency

### Tube Rotation

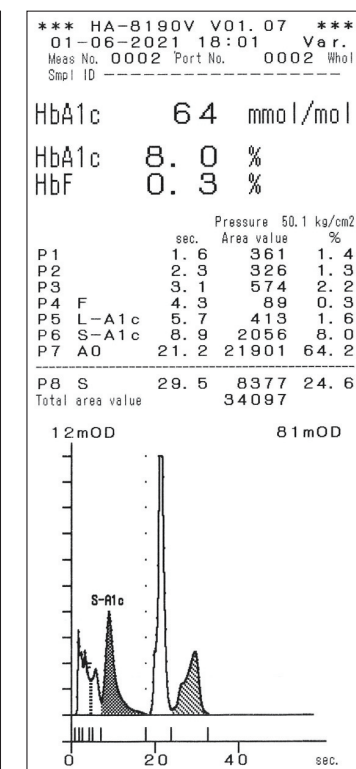
Automatic positioning of barcoded tubes  
Automatic sample mixing



Tube Rotation



FAST mode



VARIANT mode



	HA-8180V (Previous model)	HA-8190V	Description
Measurement time	Fast mode : 48 seconds Variant mode : 90 seconds	<b>Fast mode : 24 seconds</b> <b>Variant mode : 58 seconds</b>	24 seconds faster 32 seconds faster
Variant Hb detection	HbE, HbD		Major four Variant Hbs
Variant Hb separation	HbS, HbC		
Features	Dual Mode System  Sample tube spinning  Anaemia Rack	Dual Mode System <b>Automatic switching between modes during standard operation</b>  Sample tube spinning  Anaemia Rack <b>Easy Barcode Reading</b>  <b>Touch Panel Screen</b>  <b>Operator Management</b>	Measurement Mode  Automatic mixing of blood  Hb low level samples Automatic rotation of sample tube for barcode detection  Intuitive operation  Multiple levels of user access

Related product



Exclusive HbA1c Quality Control Material  
extendSURE CONTROL

The Hemoglobin A1c control is available in lyophilized, and has two levels control.  
The controls are in glass vials with screw top caps. Each vial is reconstituted with 0.25 ml (lyophilised) to give a typical hemoglobin concentration of 14 g/dL.  
These controls are listed with US FDA and are CE-Marked.

Legal manufacturer  
arkray factory, inc.

1480 Koji Konan-cho, Koka, Shiga-ken 520-3306, JAPAN

European representative  
arkray europe, b.v.

Prof. J.H. Bavincklaan 2, 1183 AT Amstelveen, THE NETHERLANDS  
<https://www.arkray.eu/english/>

\*Designs and specifications may be changed without prior notice.

arkray global business, inc.

Yousuien-nai, 59 Gansuin-cho, Kamigyo-ku,  
Kyoto 602-0008, JAPAN  
TEL +81-75-662-8979 FAX +81-75-431-1202