

arkray



Solving Problems, Evolving ADAMS

Automatic Glycohemoglobin Analyzer

ADAMS A1c

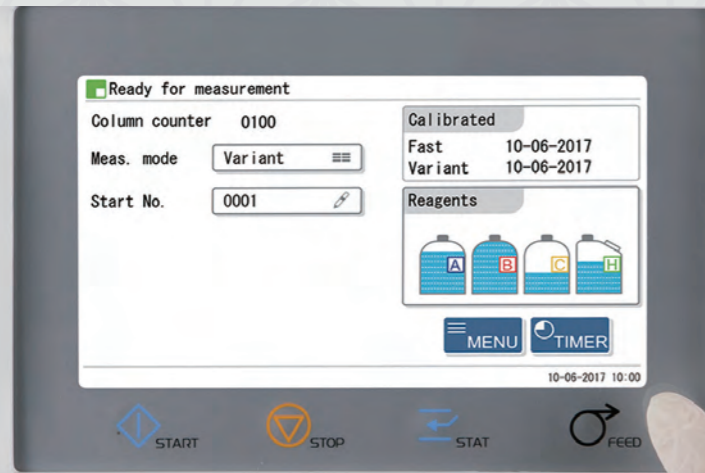
HA-8190V

arkray, inc.

Automatic Glycohemoglobin Analyzer

ADAMS A1c HA-8190V

Compact design
HPLC technology
*Automatic mode switching function

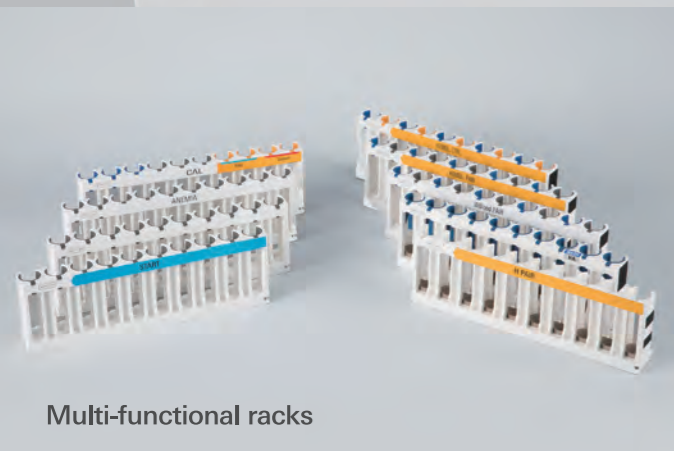
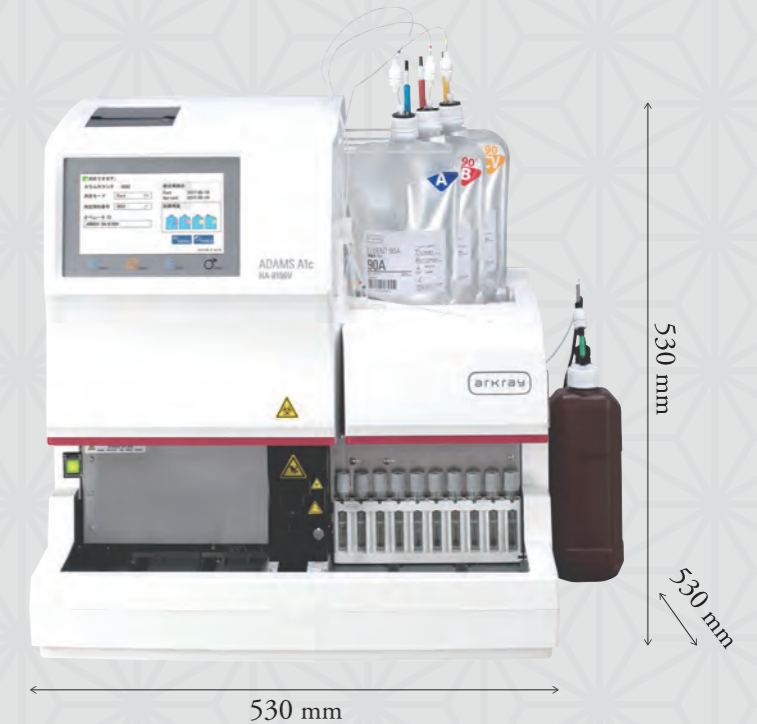


With touch screen



HPLC technology

ADAMS A1c
HA-8190V



Multi-functional racks



Sample processing

*The automatic mode switching is controlled via the LIS/host computer.

Accuracy

HPLC technology

HPLC technology provides highly accurate results

Speed

Fast mode

measurement in 24 seconds

Variant mode

measurement in 58 seconds

Flexibility

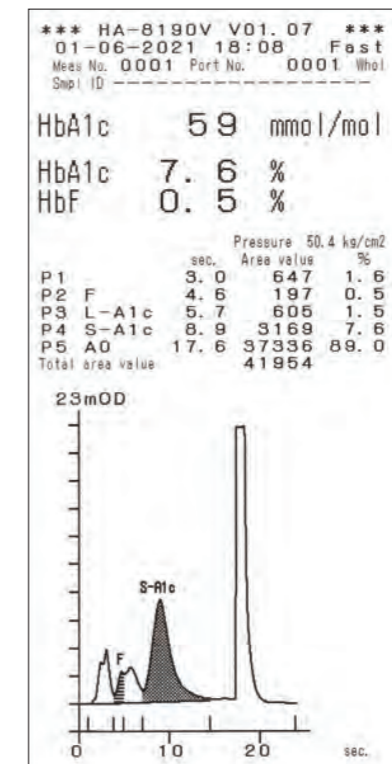
*Continues measurement mode switching
The system automatically optimises throughput based on orders from the host LIS

Chromatograms give us 'insight'

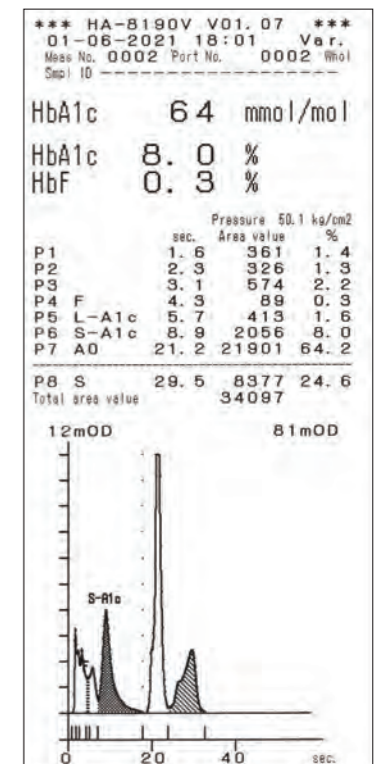
Reduced interference from

Modified and Variant Hbs

- HbS
- HbC
- HbD
- HbE
- Labile HbA1c
- Modified hemoglobin



FAST mode



VARIANT mode

Easy of Use

Optional Extension loader

Less hands on or Low maintenance

Efficiency

Tube Rotation

Automatic barcode positioning and sample tube mixing



Tube Rotation

	HA-8180V (Previous model)	HA-8190V	Benefit / Description
Measurement time	Fast mode : 48 seconds Variant mode : 90 seconds	Fast mode : 24 seconds Variant mode : 58 seconds	50% faster 35% faster
Variant Hb detection	HbE, HbD		Major four Variant Hbs
Variant Hb separation	HbS, HbC		
Features	Dual Mode System Sample tube spinning Anaemia Rack	Dual Mode System Automatic switching between modes during standard operation Sample tube spinning Anaemia Rack Easy Barcode Reading Touch Panel Screen Operator Management Optional MiniLab Data Manager	Optimal workflow & Faster processing Automatic mixing of blood Manage low level Hb samples Automatic rotation of sample tube for barcode detection Intuitive operation Multiple levels of user access Improved sample management and /or improved user software

Related product



Exclusive HbA1c Quality Control Material extendSURE CONTROL

The Hemoglobin A1c control is a lyophilized product which has two levels.

The controls are in glass vials with screw top caps. Each vial is reconstituted with 0.25 ml (lyophilised) to give a typical hemoglobin concentration of 14 g/dL.

These controls are listed with US FDA and are CE-Marked.

Legal manufacturer arkray factory, inc.

1480 Koji, Konan-cho, Koka-shi, Shiga 520-3306, JAPAN

European representative arkray europe, b.v.

Prof. J.H. Bavincklaan 2, 1183 AT Amstelveen, THE NETHERLANDS

<https://www.arkray.eu/english/>

*Designs and specifications may be changed without prior notice.

arkray global business, inc.

Yousuien-nai, 59 Gansuin-cho, Kamigyo-ku,

Kyoto 602-0008, JAPAN

TEL +81-75-662-8979 FAX +81-75-431-1202